

Solution Design Advisory Group (SDAG)

Meeting #3
BIS Conference Centre

24 January 2013

Agenda: SDAG

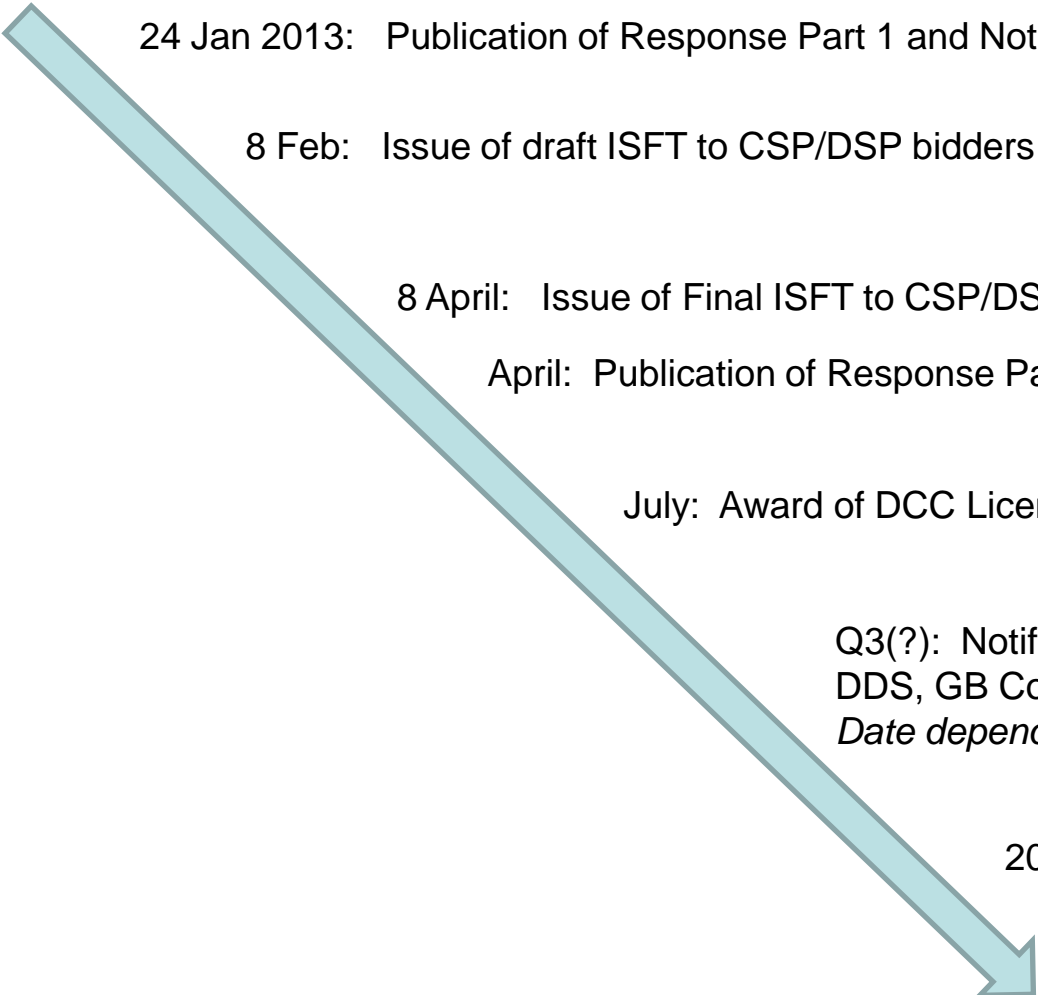
BIS Conference Centre

10:00 Thursday 24th January 2013



No	Time	Subject	Lead
1	10.00 - 10.15	Actions from previous meeting	Colin Sawyer
2	10.15 – 10.45	Consolidated Issues Log - update	Colin Sawyer
3	10.45 – 11.30	Discussion of Technical and Security Architecture Documents (Opportunity for members to raise issues and/or points for clarification)	Andy Armstrong
4	11.30 – 12.00	Feedback from Installation and Commissioning Workshop	Mike Bennett
5	12.00 – 12.45	HAN Strategy	Peter Morgan
		Lunch	
6	13.15 – 14.00	Enduring Design Documents and other Artefacts	Julian Hughes
7	14.00 - 14.30	Forward Look and proposed topics for SDAG discussion	Colin Sawyer
8	14:45 – 15:00	AOB	

SMETS 2 timetable



24 Jan 2013: Publication of Response Part 1 and Notification of SMETS 2a (gas/elec/IHD)

8 Feb: Issue of draft ISFT to CSP/DSP bidders (including CHTS)

8 April: Issue of Final ISFT to CSP/DSP bidders (including CHTS)

April: Publication of Response Part 2 and publication of draft CPA requirements (1)

July: Award of DCC Licence and CSP/DSP contracts

Q3(?): Notification of SMETS 2b and CHTS – includes
DDS, GB Companion Spec, CPA Regime (1&2)
Date dependent on release of ZigBee SEP 1.2

2014 tbd: Designation of SMETS 2

1. ACTIONS FROM PREVIOUS MEETING

Colin Sawyer

Actions

Action ID	Action	Due Date	Owner	Status
SDAG_2.01	CPA Security Workshop: DECC agreed to invite members of SDAG to the working group that was set to determine the security characteristics. SDAG members were to forward the invite to appropriate representatives from their organisations.	21.12.12	GH All	Closed
SDAG_2.02	IHD Data Storage: Energy UK offered to share ICO advice on whether the IHD is classified as a customer device. <i>Update: Energy UK response: RM issued the correspondence from the ICO to DECC on the 18th of December and suggested that DECC may wish to engage directly with Dave Evans at the ICO directly. Energy UK would be happy to facilitate this. The letter from the ICO can be shared with SDAG members.</i>	24.01.13	RM	Ongoing
SDAG_2.03	Installation and Commissioning Workshop 15 January 2013: DECC agreed to extend length of workshop, confirm that meter manufacturers have been invited and to send out preparatory material to all attendees before the event DECC agreed to include in scope of workshop: <ul style="list-style-type: none"> - Will IGT installation model work with Installation & Commissioning Processes? - Test the process for new connection events as well as standard replacement <i>Update: Workshop invite extended</i>	21.12.12	JH	Closed
SDAG_2.04	Addressing the issues raised at other SMIP forums: DECC agreed to circulate the list of closed issues for: <ul style="list-style-type: none"> - Technical Architecture (JH) - BPM (Mike Bennett) <i>Update: Issues consolidated into one master issues document (incorporating closed issues) and circulated 15 Jan 13</i>	24.01.13	JH Mike Bennett	Closed
SDAG_2.05	Revised CoS Model: Energy UK agreed to speak to CS about the plan and scope of CoS proposal and any involvement of consumer focus in the signoff stakeholder approach <i>Update: Energy UK response: CS confirmed after the meeting that the involvement of Ofgem in the design of the CoS proposal satisfied the consumer representative engagement</i>	24.01.13	RM	Closed
SDAG_2.06	Zigbee HAN Controller: DECC agreed to confirm if there would be a CH requirement to act as Zigbee HAN Controller. <i>Update: This is confirmed and will be captured in the companion spec</i>	24.01.13	CS	Closed
SDAG_2.07	User Roles Matrix; DECC agreed to confirm the dates to discuss User Roles Matrix including which services each DCC Service User will have access (including critical commands).	24.01.13	JH	Open

Actions

SDAG_2.06	Zigbee HAN Controller: DECC agreed to confirm if there would be a CH requirement to act as Zigbee HAN Controller. <i>Update: This is confirmed and will be captured in the companion spec</i>	24.01.13	CS	Closed
SDAG_2.07	User Roles Matrix: DECC agreed to confirm the dates to discuss User Roles Matrix including which services each DCC Service User will have access (including critical commands).	24.01.13	JH	Open
SDAG_2.09	Import/export Matrix: EDF agreed to clarify the comment re import/export supplier data exchange from Energy UK list of gaps <i>Update: EDF: As all smart meters will be capable of supporting export metering there needs to be a clear definition of how the relationship between import and export Suppliers will work, especially as the import Supplier may not know there is export at a site if it has a different Supplier. There are no formal communication routes (i.e. dataflows) at the moment, only an obligation on the export Supplier to appoint the same MOP as the import Supplier.</i> <i>Some example questions that will affect this relationship are:</i> <ul style="list-style-type: none"> • <i>What security keys will need to be put on the smart meter for an export Supplier?</i> • <i>How will these get onto the meter:</i> <ul style="list-style-type: none"> ○ <i>At installation</i> ○ <i>Post installation when export is added to existing import</i> • <i>How will the export Supplier be notified if the import Supplier decides to opt out of the DCC?</i> <i>The underlying assumption seems to be that the import and export Supplier can operate totally independently of each other with the export Supplier just having access to a subset of the service requests available to the import Supplier, we think the role of the export Supplier within the end to end architecture needs more clarity.</i> <i>Action: Issues entered into Master Issue log for Mike B to close</i>	24.01.13	AP	Closed
SDAG_2.10	WAN Coverage: DECC agreed to consider a proactive push of change of coverage information to suppliers.	24.01.13	SS	Open
SDAG_2.11	Billing reads: Npower agreed to inform DECC if they have any residual concerns with billing cycle orchestration & push/pull comments once they have read the Technical Architecture document	24.01.13	AC	Open
SDAG_2.12	Error Handling: DECC agreed to consider error handling requirements for service orchestration & determine whether further details need to be provided in ISFT.	24.01.13	JH	Open
SDAG_2.13	Batching of User requests: Stakeholders were keen to get a requirement for batch updates of service requests over the DCC User Gateway – DECC agreed to consider if this fitted within the architecture.	24.01.13	JH	Open
SDAG_2.14	Data access post CoS: DECC agreed to review this and provide clarity on this position <i>Update: Clarification circulated to SDAG members</i>	24.01.13	CS	Closed
SDAG_2.15	Outage reporting: DECC to talk to Alan Creighton of the ENA to discuss Outage Management requirements and confirm requirements from the ENA and ensure alignment within the CSP schedule 2.1	24.01.13	PC	Open

2. CONSOLIDATED ISSUES LOG - UPDATE

Colin Sawyer

Origin of issues

- 100+ issues were captured from
 - SSAG,
 - EUK,
 - BPDG,
 - Workshop (Nov 12)
- Rationalised to 50 live issues in a workshop with EUK on 7 Jan 13

Resolution

- Identify owners and resolution channel (dialogue, DA meetings)
- Identify target deliverable
- Prioritise issues
- Report of progress issued monthly to SDAG members

3. DISCUSSION OF TECHNICAL AND SECURITY ARCHITECTURE DOCUMENTS

Andy Armstrong

1. **Security requirements for equipment** cannot be fulfilled by existing Zigbee protocols. It is acknowledged that significant development is required to deliver a suitable technical solution. We are unsighted on the impacts to timelines (and any consequential impact to SMIP planning assumptions) and mitigating actions.– EON Adrian R
2. **A description of the HAN** and the fact that DECC do not intend defining the physical architecture - NPower -Andrew C
3. **HAN Architecture** - The scope should include all components of the OSI model, from the protocols and frequencies to be used, to the application layer. It should also include the specifications for the various interfaces that will be required (e.g. for the Consumer Access Portal) and how data will be exchanged across these boundaries. In addition the HAN architecture should also include the variants needed for a wired solution, required to address the challenges posed by high-rise buildings (or those with similar challenges). The specification should also include a data architecture showing the location of the various data stores (whether permanent or transitory). – EDF Paul S

4. FEEDBACK FROM INSTALLATION AND COMMISSIONING WORKSHOP

Mike Bennett

Areas covered:

- Pre-install
- Supplier initiated install/locally initiated install
- Install and leave/HHT usage
- Decommission

Major themes:

- Happy day scenarios largely okay
 - some issues around edge cases requiring further analysis
- Questions around the wider roll out environment
 - e.g. CSP responsibilities, Regulatory consideration of edge cases
- RACI approach very useful
- Obligations - SEC

Next steps:

- Produce Install and Commission Event Lifecycle Process Model
 - includes RACI
 - includes updated Interaction diagrams (enduring artefacts)

5. HAN STRATEGY

Peter Morgan

100% HAN Coverage - The issues...



2.4GHz will achieve 70% coverage – additional solutions will be required to deliver 100% HAN coverage and we would like to set out in the Spring response a technology strategy that addresses the 30% gap

There are cross cutting issues in achieving 100% HAN coverage

- What 868MHz options are there and when will they be ready?
- What HAN PLC options are there and when will they be ready?
- What options in addition to RF and HAN PLC will be required?
- What is the impact on the communications hub (technical and commercial) of the different options?
- What is the impact on the consumer experience of the different options (e.g. CADs)?
- What development options to compress timescales are there for the favoured solutions?
- Where should IHD/CADs be sited within the property?

100% HAN Coverage - The approach to arriving at an answer...



We are undertaking a phased approach:

- Define the technology 'ingredients' in terms of their technical and commercial feasibility
- Use the technology 'ingredients' to assemble different scenarios to achieve 100% HAN coverage
- Undertake qualitative and quantitative analysis of the scenarios against agreed criteria (consumer impact, cost, timescale and future flexibility)

Activities

- Defining the 'ingredients' - Programme will work with internal and external experts (with support from EUK) to baseline the 'ingredients'
- Scenarios – Programme will assemble scenarios and test these as well as the 'ingredients' with industry stakeholders
- Analysis – DECC economists, policy team etc.

Deliverables and timescales

- Decisions on achieving 100% HAN coverage will be set out in the Part 2 consultation response in Spring 2013

Some HAN strategy questions

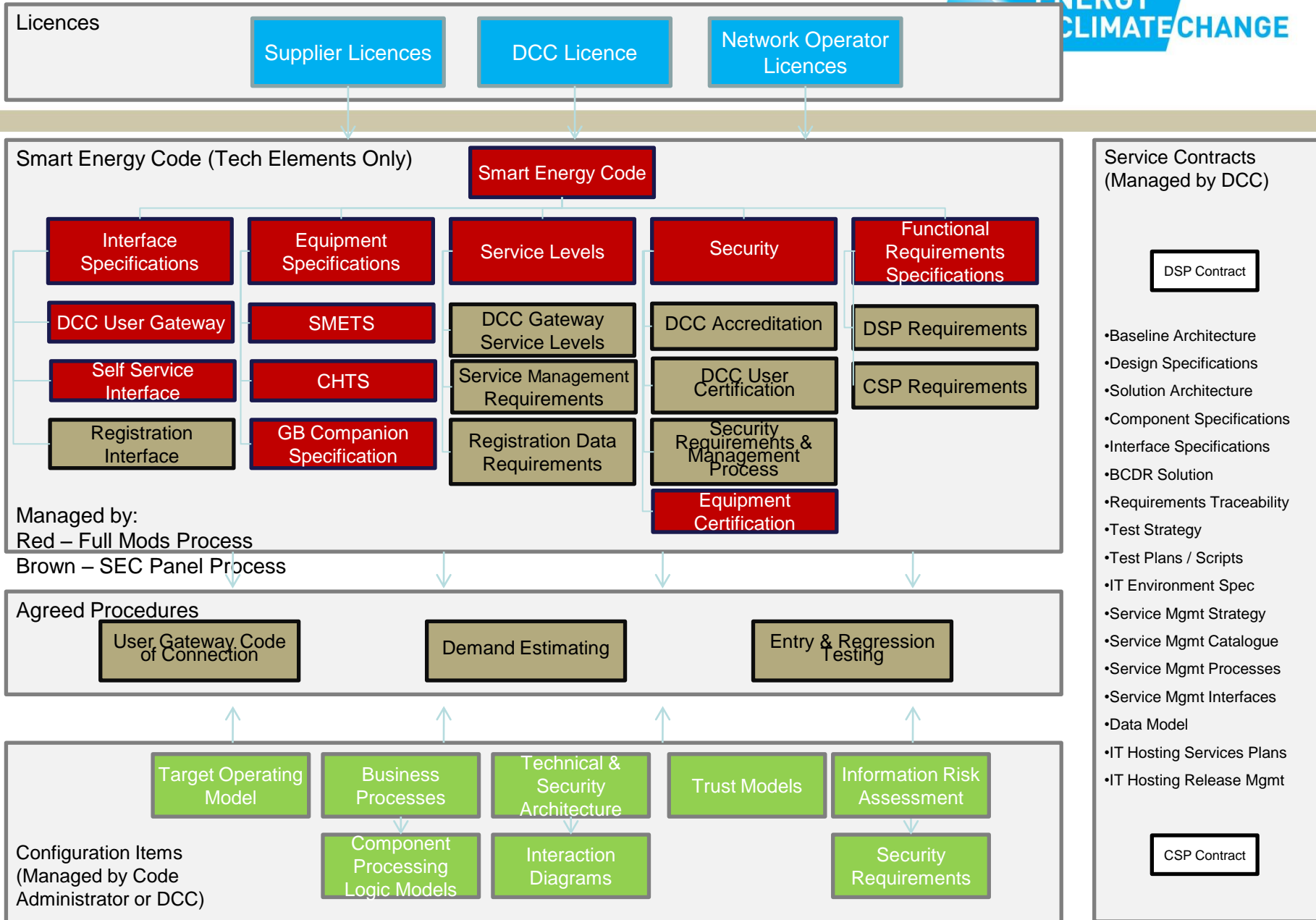
Question	Issue
1	<p>What obligations should there be on suppliers ahead of a full 868 / wired solution?</p> <ul style="list-style-type: none">• Only install if home can be 'fully 2.4' or allow CH replacement later?• Notify consumer of HAN type to support CAD procurement?
2	<p>What options are there to accelerate the availability of a full 868 solutions?</p>
3	<p>What options are there to accelerate the availability of a wired HAN solution?</p>
4	<p>Should DECC actively prioritise one solution over another, both or neither wired or full 868 solutions?</p>
5	<p>What sub-obligations may be required in the interim period?</p> <ul style="list-style-type: none">• Use of repeaters for remote IHDs?• Siting of IHD in the property?

6. ENDURING DESIGN DOCUMENTS AND OTHER ARTEFACTS

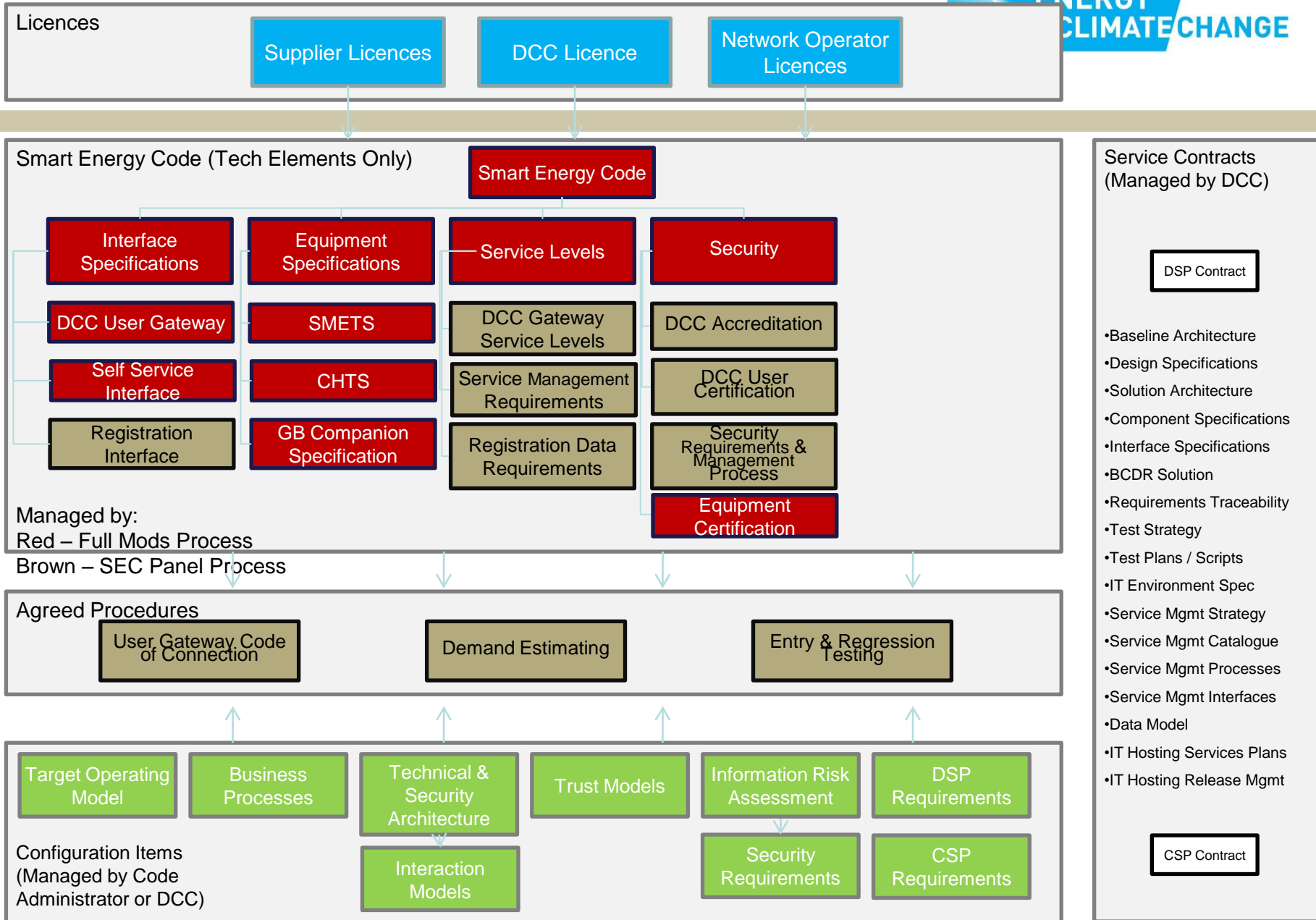
UPDATE ON PROPOSED REVISIONS TO 'CONFIGURATION ITEMS'

Julian Hughes

Current position



Updated Position



Proposed revisions - detail



- Only changes to 'Configuration Items' proposed:
 - Update BPMs to (1) ensure alignment with current architecture and (2) remove any duplication / overlap with more detailed artefacts now in place e.g. Interaction Diagrams
 - Rename Sequence Diagrams to Interaction Models (more accurately reflect what they are)
 - Reposition DSP & CSP Requirements from SEC to DCC Configuration items
 - Component Process Logic Models no longer maintained, given the more detailed work on Companion Spec / SMETS / CHTS now underway

7. FORWARD LOOK AND PROPOSED TOPICS FOR SDAG DISCUSSION

Colin Sawyer

SDAG – Forward Look

- February



1. *HAN Strategy*
2. *CoS*
3. *Parse and Correlate*
4. *CAD Pairing*

8. AOB

Date for Next Meeting

Next Meeting(s)

- Confirm Meeting 4 – 26 February 2013
BIS Conference Centre, 10am – 3pm,
Agenda and invite to follow.